

**Jason North**  
(610) 451-1178  
[jnorth@chesequip.com](mailto:jnorth@chesequip.com)

**Nathan Leyburn**  
(443) 993-3007  
[nleyburn@chesequip.com](mailto:nleyburn@chesequip.com)



**CHESAPEAKE**  
ENVIRONMENTAL EQUIPMENT

*Proudly Serving MD, DC & DE*

**Jeffrey Mancini**  
(804) 614-8377  
[jmancini@chesequip.com](mailto:jmancini@chesequip.com)

**Daniel Thompson**  
(720) 908-0943  
[dthompson@chesequip.com](mailto:dthompson@chesequip.com)

## REPRESENTING THE FINEST MANUFACTURERS WITH HONESTY & INTEGRITY



### ABS-SULZER PUMPS & MIXERS

**Pumps:** Drypit, Submersible, Grinder, Solids-Handling, Axial Flow and S.S. Pumps. Utilizing the proven Contra-Block Technology for clogging situations.  
**Mixers:** Submersible Mixers including Flow Booster, Low-Speed, Compact & Self-Aspirating Aerators.



### SULZER HST TURBO BLOWERS

HST Turbo Compressors incorporates proven magnetic bearing technology that provides very High Efficiency, Reliability, Durability, Low Noise & Low Lifecycle Costs.



A Sulzer Brand

### JOHNSTON PUMPS

Vertical Turbine, ANSI & Split-Case Pumps. Johnston Pumps offers highly efficient and extremely durable equipment in a wide range of capacities for a wide range of applications.



### AIRVAC

Specializing in vacuum wastewater conveyance systems. Airvac vacuum sewers are a cost-effective, environmentally friendly alternative to traditional gravity and pressure sewer systems providing low maintenance, efficient and reliable.



### APEX DOMES

Engineered Cover Systems that are custom designed & constructed of all-aluminum materials. Applications include; liquid covers, dry bulk covers, retrofits, new and pressurized domes. Options include; skylights, interior insulation, wall extensions, ventilation, walkways, doors and dormers.



### AQUALITEC

Pump Station Bar Screens w/ vertical orientation capability, Multiple Rake, Washer Compactors, Grit Classifiers, Drum Screen, Spiral & Trash Screens. Sludge & Leachate Treatment Equipment.



### ATARA EQUIPMENT LTD.

Conveyor equipment: Shaftless, Live Bottom, Vertical, Screw, Screw Compactors, Drainage & Silo. Additional equipment offerings: Screening Press, Screw Feeders, Slide Gates, Vertical Grit Classifier, Grit Chamber & Washer Compactors.



### BIOREM

Specializing in complete Odor, VOCs & hazardous air removal systems. Bio-Sorben® media (10 yr warranty), Skid Mounted Systems, Moisture Removal, Bio Tricking Filters and Bio-Gas Conditioning Systems available.



### CONTINENTAL CARBON GROUP

Specializing in Carbon Based Odor Control, Air and Water Filtration Systems. Reliable and effective way of treating odorous compounds. Exclusive manufacturer of Calgon Carbon odor control systems in the U.S.



### BIOWORKS

Specializing in both BNR & ENR treatment systems utilizing biological processes to remove pollutants resulting in high quality treated effluent. Process is via their extended aeration, fine bubble aeration system. Oxirise® Maintenance & Retrieval Systems.



### WATER FILTRATION SYSTEMS

Continental Carbon Group designs and manufacturers carbon filtration systems specifically for the water industry. Complete systems include the design, vessels and carbon media.



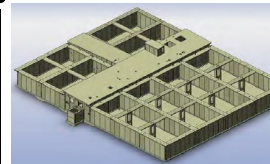
### DE NORA—UV SYSTEMS

Formerly CalgonCarbon. The Sentinel® In-Line Systems treats water from 0 to 40 MGD range flows. Their Open Channel C3 Series Systems for wastewater utilizes efficient low pressure, high output lamps that requires less lamps per system.



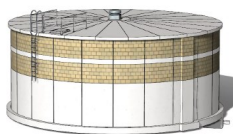
### DUTCHLAND, INC.

Specializes in the design, engineering, manufacturing, construction of high quality precast post-tensioned concrete water, wastewater structures and turn-key treatment plants. A standard two year warranty is provided.



### RECTANGULAR PRECAST TANKS

Dutchland's pre-cast, post tensioned rectangular concrete tanks can be utilized for oxidation ditches, extended aeration, SBR systems, reactors, etc. Tanks can be differentially buried & include walkways.



### CIRCULAR PRECAST TANKS

Dutchland's pre-cast, post tensioned circular & elliptical concrete tanks can be utilized for several applications, including; water storage, clarifiers, CSO, digester, equalization, reactors, effluent, etc.



### ENVIRODYNE

Specializing in Clarifiers, Hercules™ Drive Units, Gravity Thickeners, Flocculators, Brush/Disc Rotor Oxidation Ditches, Algae Cleaning System, Grit Systems, Vertical Motion Mixers, Belt Filter Presses and Digester Equipment

Please check <http://www.chesapeakeequipment.com/> for additional locations & manufacturers

\*\*Please note, not all equipment lines are represented in all locations\*\*



### EXCEL FLUID GROUP

Providing innovative packaged pump station solutions to fit a variety of applications. EFG is a premier manufacturer of submersible, water booster, chemical and no-vault stations. Stations are custom designed with controls along with basin materials options including HDPE, FRP or Pre-Cast Concrete



### FORSTA FILTERS

Forsta offers self cleaning water filters that are low maintenance, highly efficient and dependable. Utilized in the water industry, including wastewater markets during the secondary & tertiary phase.



### GLASCO UV

Glasco UV has manufactured UV systems for Industrial, residential, commercial and municipal applications for over 50 years in NJ. Products include Horizontal, Vertical, Flow Through, Chambered, Explosion Proof, PVC, Specialty and Retro Fits.



### GLASS · STEEL, INC.

Offering FRP products including: Clarifier troughs, baffle walls, weir plates, walkable launder covers, stop logs, stamford & scum baffles, ladders, parshall flumes, walkway and handrail systems.



### LIGHTHOUSE FILTERS

Specializing in water filtration systems for primary, secondary and tertiary systems. Product offerings include Plate Clarifiers and Volcano Sand Filters.



### IEC, INC.

Specializing in cover and liner systems including: Clarifier Launder Covers, Gas Storage Systems, Clarifier Covers, Odor Control Covers, Tank Cover, Lagoon and Pond Liners.



### PRO-WATER SYSTEMS

Specializing in customized wastewater treatment systems. Containerized Models with flow capacities between 3,000 gpd to 100,000 gpd. Field Installed systems up to 0.5 MGD.



### MASS TRANSFER SYSTEMS

Jet Aeration, Jet Mixing, Self-Aspirating Submersible Aerator, Floating Effluent Decanters, Radial Pod Aerators, Liquid Recirculation Pumps, Air Blowers.



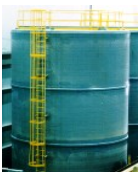
### STANDARD SOLAR

Standard Solar is a leading solar developer with over 1,500 installations. Full service support includes: design, engineering, installation, financing & operation/maintenance. Ground, Roof or Parking Mount Systems are available.



### TANK CONNECTIONS

High quality and precision RTP (rolled, tapered panel) bolted tanks for the water, wastewater and industrial sectors. Tank designs incorporate fusion powder coated technology that outperforms other tank coating systems with high durability, low maintenance and longer life.



### CHEMICAL TANKS w/ DATA DESIGN SERVICES

ASSMAN - Polyethylene & Plastic tanks  
Belding Tank Tech. - FRP and Stainless Steel Tanks  
Composites USA - FRP Duct, Tanks, Stacks and FRP Pipe



### RF VALVES

RF Valves offers high quality Pinch and Knife Gate Valves in manual, hydraulic, pneumatic & motorized settings. USA Headquarters located in Hanover, MD.



### VENT-O-MAT

Cutting edge air release valves that outperforms competitors. Utilizes HDPE floats with no mechanical components. Standard ARV functions include: fill venting, vacuum break, continuous venting, surge alleviation and water hammer protection.



### WAGNER / RAM INDUSTRIAL

SBR Process Systems, Extended Air Systems, Denite Filters, Polymer Feed Systems, DAF, SAF, Plate Clarifiers, Oil Water Separators & Pump Systems.



*Allegheny, Frederick, Garrett & Washington Counties Only*



### WSI INTERNATIONAL

MBBR / Bio Chip reactor systems. Offers custom waste water treatment package systems with over 30 years of experience.



### WASTEWATER TECHNOLOGIES

Complete Packaged Water Treatment facilities. Biorotor™ biological treatment system, BioDISC™ tertiary filtration systems, MBR Process Systems and Oil-Water Separators.